

TuffCOM

Tiltmeter Communication Software

TuffCOM is a highly flexible Windows-based software program that allows for easy connection and data collection of Applied Geomechanics digital tiltmeters and clinometers. Instruments can be connected

directly to a PC serial port, addressable radio or a serial to network converter—allowing a very flexible instrument array to grow with a customer's current and future needs.



RAPID DATA COLLECTION

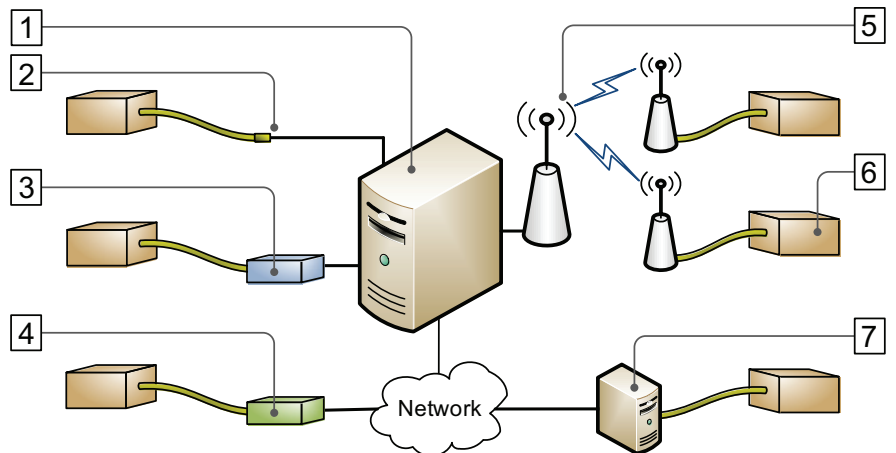
TuffCOM is a lean but highly functional software application that is intended to expedite automatic collection of Applied Geomechanics digital tiltmeter data. TuffCOM installs quickly and works with both Iris and Lily firmware architectures. By automatically detecting what type of instrument is connected to a serial port, the instrument array can be grown quickly and efficiently. An easy to navigate graphical interface and the ability to monitor an instruments 'real time' data stream both speed up and simplify field installations.

PEACE OF MIND

TuffCOM is a highly flexible program that can connect to instruments using various connection methods simultaneously. Add, temporarily disable, or remove instruments as your application grows or changes. Give yourself peace of mind knowing that TuffCOM can change with a site's requirements.

ALWAYS RUNNING

The service portion of TuffCOM runs 'behind the scenes', automatically reconnecting with instruments and downloading data—regardless of if someone has logged into a computer or if the TuffCOM GUI is visible.



1 PC with TuffCOM

A desktop or laptop running TuffCOM can connect to hundreds of instruments for local processing or for upload to a server

2 Direct Serial Connection

Any PC with built-in RS232 port can use TuffCOM to connect AGI digital tiltmeters

3 USB to Serial Converter

AGI pin-compatible USB to RS232 and RS422 serial converters

4 Ethernet to Serial Converter

AGI pin-compatible RS232 or RS422 to Ethernet Converter

5 Radio Network

Any direct radio connection and AGI addressable radio networks

6 AGI Digital Tiltmeter

Any Applied Geomechanics digital tiltmeter (Including Lily, MD900, MD800, D700-Series, etc.)*

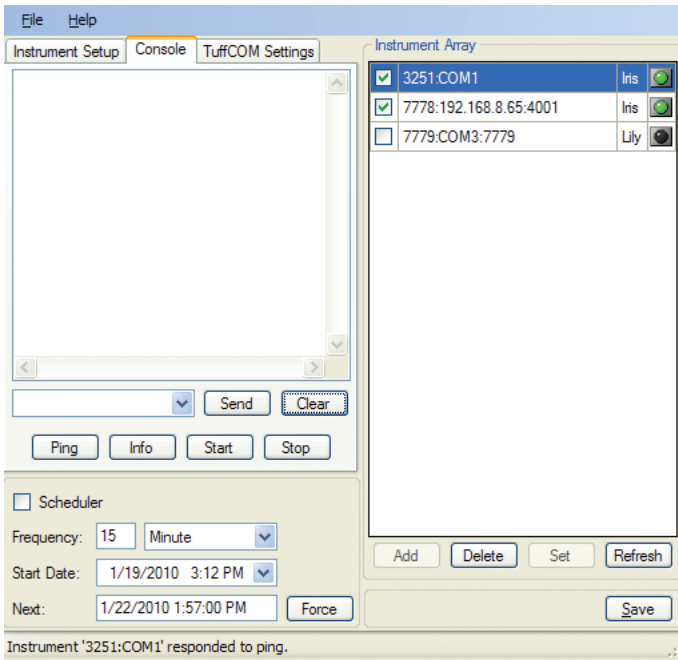
7 PC or Single Board Computer Serial Port to IP Address

Any PC or SBC with serial port to IP address conversion software

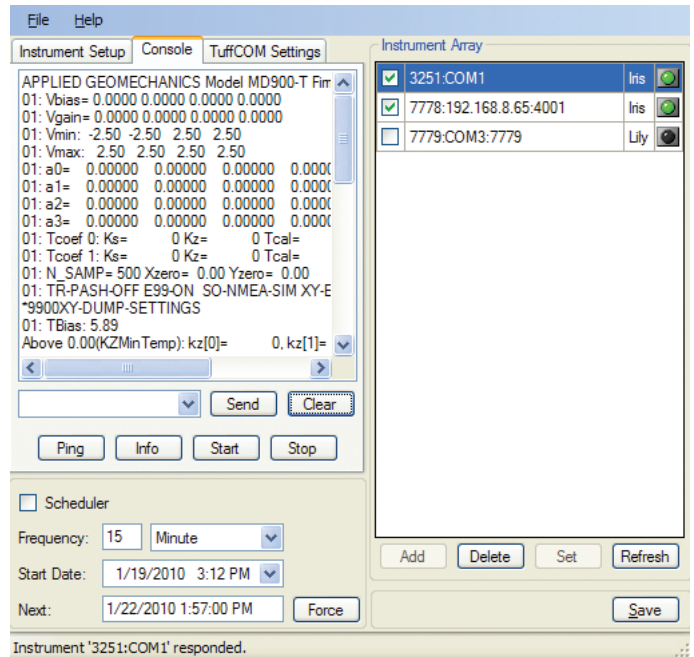
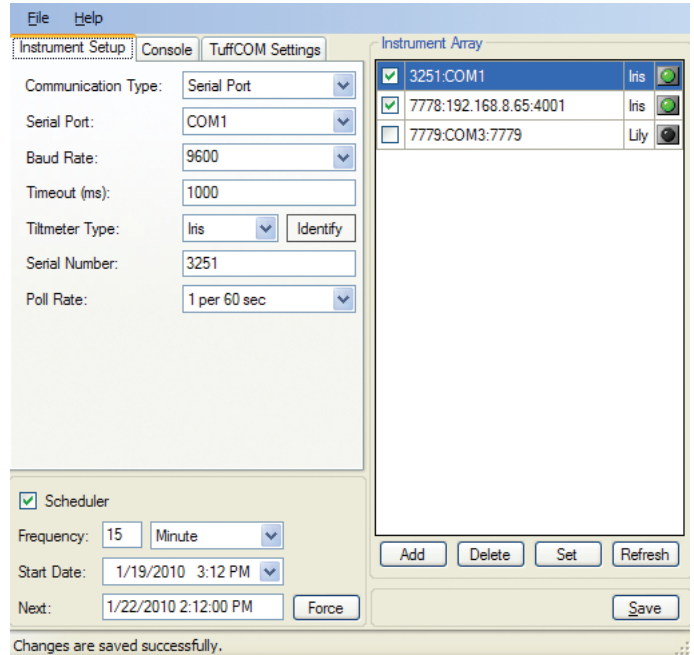
CENTRALIZE DATA COLLECTION

An automated FTP CSV file uploader is also available that automates web data collection. TuffCOM is designed to integrate seamlessly with Atlas, enabling up to the minute live data visualization when used with the FTP file uploader.

* MD900, MD800, D700-series must be using firmware version 5.2 Rev. N or later



TuffCOM has various file output options, shown above, and can connect with up to 100 instruments. A data output example is shown above.



APPLIED GEOMECHANICS, INC.

140 Chestnut St.
 San Francisco, CA 94111
 T: +1-415-364-3200
 F: +1-415-861-1448
 geomechanics.com
 A CARBO Company

