

StrataStimSM

Our workflow helps optimize stimulation treatments for matrix-based reservoirs

FEATURES

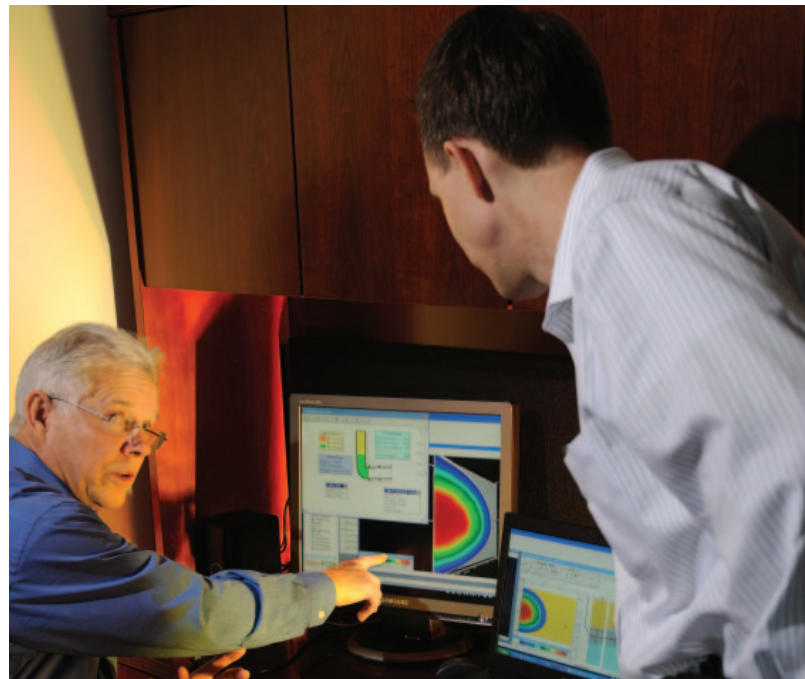
- Guides the stimulation analyst toward a unique stimulation solution
- Provides a rigorous method to understand data that leads to better stimulation results
- Helps the engineer select cost-effective completion methods
- Builds database for future optimization during late life-cycle

StrataGen® Engineering's innovative StrataStimSM model is a proven workflow process that yields a better solution than traditional methods when optimizing stimulation treatments for matrix-based reservoirs.

StrataStim analyzes a broad array of data to yield critical anchor points, leading to valuable information for use in Fracpro®PT and other reservoir simulators to model the target asset's economic performance.

StrataStim follows a rigorous discipline that enables StrataGen engineers to design and analyze pre-frac diagnostic tests that accurately calculate such values as reservoir permeability and pressure and stress environment. Solving stress and permeability issues yields more accurate projections for production improvement from different stimulation treatments. These values help determine the best treatment size and method to yield cost-effective completions. They also help the StrataGen stimulation design engineer select the best completion and stimulation programs and develop well- and field-planning scenarios that can lower your costs and help you analyze completion performance.

After the well is designed and analyzed, our engineers conduct a full-field analysis and develop discrete engineering models that are used to exploit assets.



StrataGen, Inc.

Energy Center II
575 N. Dairy Ashford, Suite 300
Houston, Texas 77079 USA
T: +1-281-921-6400
F: +1-281-921-6401
StrataGenEngineering.com

A CARBO Company

©2010 StrataGen, Inc. All Rights Reserved. 1001_140

