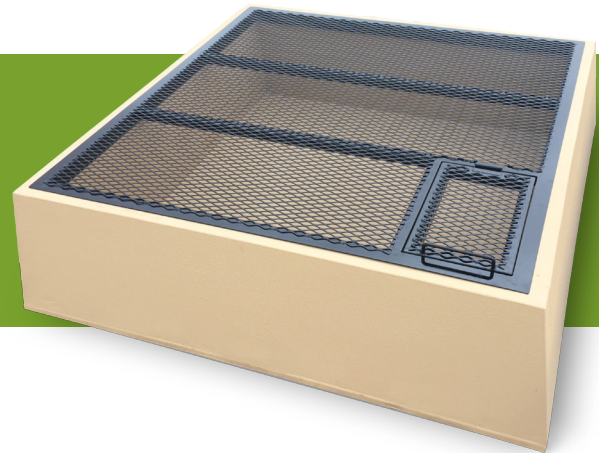


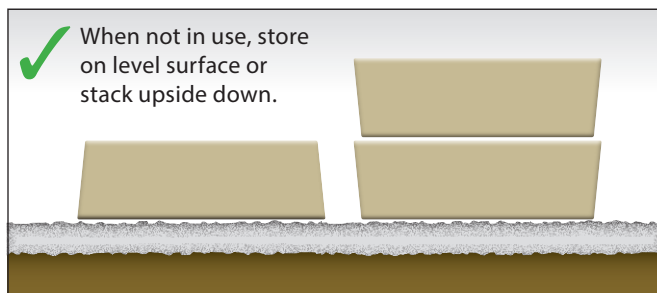
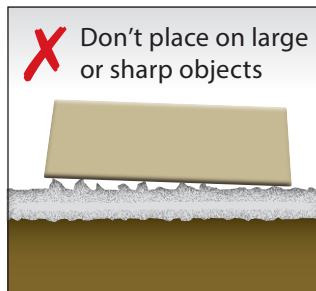
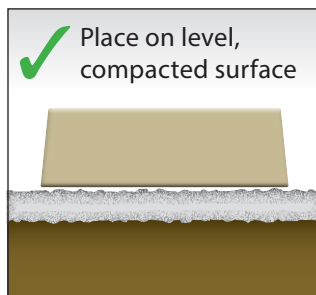
Installation and usage instructions

Thank you for choosing a WASTEGUARD portable, multipurpose catch basin. We've provided the following guidelines to ensure proper installation and maintenance. When installed and maintained properly, you can expect years of worry-free usage.



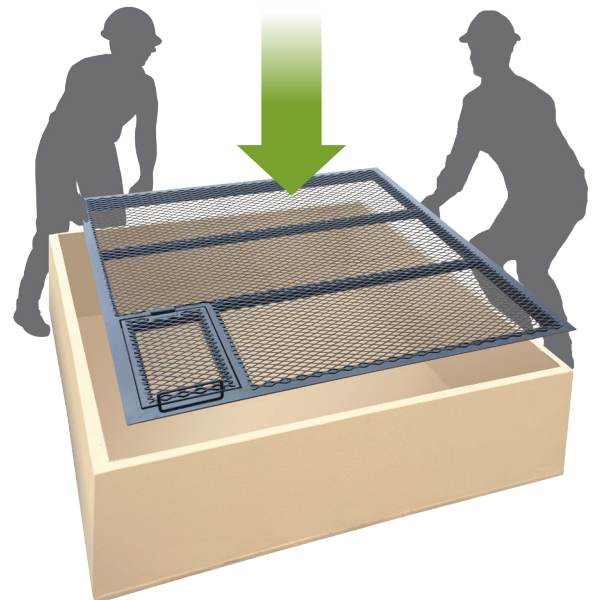
Step 1: Prepare the surface

Choose a solid, compacted, level surface such as crushed gravel or well-drained soil. Remove any large or sharp rocks or other objects. Do not place the basin over a pit or hole.



Step 2: Install the grate

Always use two or more people to handle and install your WASTEGUARD basin. Remember to wear protective gear such as hard hats, gloves and steel-toed boots, and to use proper lifting techniques. Once the basin is set up, place the reinforced metal grating on top.



Step 3: Place basin and begin usage

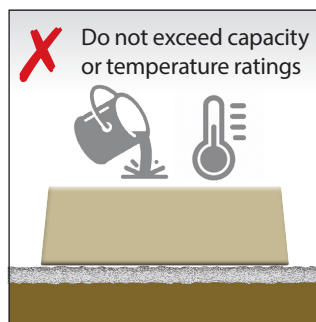
Position the basin where needed, assuring to prep the surface as indicated in step one. When not in use, store on a level surface or stack upside down. Product could be damaged if filled with liquid (e.g., rain) when not on a flat, level, continuous surface. When full, use the trap door to insert a hose for cleanout.

WASTEGUARD

Installation and usage instructions

Additional usage guidelines

1. Never modify product by cutting, drilling or otherwise penetrating the surface. This would expose the core, leaving it vulnerable to chemical attack or UV degradation.
2. Be sure that any object or equipment placed on the basin has no sharp points or protrusions that could puncture the product or its coating.
3. Do not stand, walk or place heavy objects on the basin or its grate.
4. User is responsible for chemical compatibility. See table on right for a list of compatibility ratings for common industrial chemicals.
5. Do not exceed the capacity listed on the product.
6. Maximum long-term temperature exposure should not exceed 165°F (74°C).



Chemical compatibility

Test Solution	Test Solution	Test Solution	
Sugar water	A	Hydrochloric acid 10%	A
Salt water	A	Hydrochloric acid 20%	B
Water	A	Phosphoric acid 20%	B
Acetic acid 5%	B	Phosphoric acid 50%	N
Hydrogen peroxide	A	Sulfuric acid 20%	B
Mineral spirits	B	Sulfuric acid 50%	N
Motor oil	B	Sodium Hydroxide 20%	A
Turpentine	N	Sodium Hydroxide 50%	A
Corn syrup	A	Crude Oil Basin Samples	
Diesel	B	Dugout Fed Red River	A
DINP	B	Rolfstad Mission Canyon	A
Ethylene glycol	B	Charlotte 3-Forks	A
Propylene glycol	B	Big Sky	A
Xylene	N	Yellowstone	A
Gasoline	C	Toluene	N
Tricresyl phosphate	N	Methanol	N
Trisodium phosphate 50%	A	Ethanol	N
Sodium hypochlorite	B	MEK	N
Ammonium hydroxide	B	IPA	N
Potassium Chloride	A	Ethyl Acetate	N
Potassium Bicarbonate	A		

Rating Key:

A - Recommended

B - Suitable for immersion or spill conditions for 72 hours

C - Suitable for intermittent contact for 72 hours

N - Not recommended

Need additional support? Contact customer service:

+1 800 551 3247 | assetguardproducts.com

ASSETGUARD
A CARBO business