

# CARBOBEAD

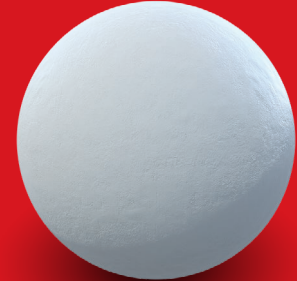
## High-performance ceramic media

### Features and benefits

- High-quality ceramic media engineered for superior strength and durability
- Exceptional roundness and sphericity
- Chemically inert, non-hazardous and produces no respirable silica dust
- Cost-effective alternative to sand and competing ceramic media
- Products meet AWWA B100 specifications

### Applications

- Abrasives
- Catalyst supports
- Concrete and cement
- Heat transfer
- Mine and tunnel roof support
- Turf infill
- Water filtration and absorption
- Wear resistance



## Engineered to outperform sand in a wide variety of industrial applications

The CARBOBEAD® family of high-performance ceramic media technologies is engineered to provide a unique combination of consistent thermal, physical and chemical properties. These characteristics provide economic and performance advantages in a wide variety of applications compared to sand and other competing synthetic media types.

### Physical properties

Typical sieve analysis  
(weight % retained)



CARBOBEAD EP



CARBOBEAD LT\*

Density	270			270							280		300	
Product size	Mesh	30/50	40/80	5/8	8/14	12/18	16/20	20/40	30/50	40/70	5/8	8/14	5/8	8/14
Millimeters	0.425-0.850	0.300-0.600	0.180-0.425	2.36-4.00	1.40-2.36	1.00-1.70	0.850-1.180	0.425-0.850	0.300-0.600	0.212-0.425	3.00	2.00	3.00	2.00
Sieve size (mesh)	Microns													
-4+6	-4750+3350													
-6+8	-3350+2360													
-8+12	-2360+1700													
-12+16	-1700+1180													
-16+20	-1180+850	5												
-20+30	-850+600	60	3											
-30+40	-600+425	35	79	1										
-40+50	-425+300			17	68									
-50+70	-300+212			1	30									
-70+100	-212+150						1							
-100+140	-150+106													
-140+200	-106+75													
Median particle diameter (D50, µm)	635	473	319	3100	1897	1374	1001	730	522	332	3.15	2.23	3.04	1.95
Effective size (D10, µm)	543	419	258	2495	1742	1211	916	648	440	285	2851	2037	2440	1758
Uniformity coefficient (D60/D10)	1.25	1.19	1.29	1.20	1.13	1.14	1.18	1.19	1.20	1.23	1.11	1.10	1.26	1.14

\* CARBOBEAD LT is NSF/ANSI 61 certified

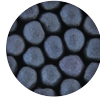


# CARBOBEAD

High-performance ceramic media

## Physical properties, *continued*

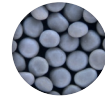
Typical sieve analysis  
(weight % retained)



CARBOBEAD CP



CARBOBEAD HSP



CARBOBEAD MAX

Density		325										360			280		360					
Product size	Mesh Millimeters	12/18 1.00- 1.70	16/30 0.600- 1.180	20/40 0.425- 0.850	30/60 0.250- 0.600	30/70 0.212- 0.600	40/70 0.212- 0.425	40/100 0.150- 0.425	40/140 0.106- 0.425	50/140 0.106- 0.300	70/140 0.106- 0.212	16/30 0.600- 1.180	20/40 0.425- 0.850	30/60 0.250- 0.600	18/20 0.850- 1.000	20/25 0.710- 0.850	30/35 0.500- 0.600	20/25 0.710- 0.850				
Sieve size (mesh)	Microns																					
-8+12	-2360+1700	2																				
-12+16	-1700+1180	82	3															3				
-16+20	-1180+850	16	74	4												85	4	93				
-20+30	-850+600	23		75	3											12	85	5	7	100	100	
-30+40	-600+425	21			68	19	3									11		87	100			
-40+50	-425+300	28				72	70	37	22								8					
-50+70	-300+212	1			8	26	45	38	35	1												
-70+100	-212+149	1				1	16	32	43	51												
-100+140	-149+105	2					8	21	43													
-140+200	-105+74	1								5												
Median product diameter (D50, μm)		1328	936	672	453	361	324	270	231	194	154	956	697	495	900	810	575	815				
Effective size (D10, μm)		1109	767	543	367	260	262	205	156	130	119	838	622	433	860	757	548	746				
Uniformity coefficient (D60/D10)		1.23	1.24	1.28	1.33	1.50	1.32	1.43	1.65	1.56	1.44	1.17	1.18	1.21	1.06	1.06	1.06	1.07				

### Typical additional properties

Density	CARBOBEAD EP		CARBOBEAD LT				CARBOBEAD CP	CARBOBEAD HSP	CARBOBEAD MAX	
	270	270	280		300		325	360	280	360
			5/8	8/14	5/8	8/14				
Roundness	0.9	0.9	0.9	0.9	0.9	0.9	0.9	0.9	0.9	0.9
Sphericity	0.9	0.9	0.9	0.9	0.9	0.9	0.9	0.9	0.9	0.9
Bulk density (lb/ft <sup>3</sup> ) (g/cm <sup>3</sup> )	96 1.56	97 1.57	106 1.70	109 1.74	113 1.81	124 1.98	117 1.88	131 2.1	104 1.67	134 2.14
Absolute density (g/cm <sup>3</sup> )	2.70	2.71	2.82	2.86	3.04	3.08	3.27	3.61	2.83	3.60
Absolute volume (gal/lb)	0.044	0.044	0.042	0.042	0.039	0.039	0.037	0.033	0.042	0.033

All data represents typical values.

Chemical composition: Aluminosilicate ceramic

Talk to CARBO to find out how we can help you enhance your production.

+1 800 551 3247  
carboindustrial.com



Proudly Made in the USA